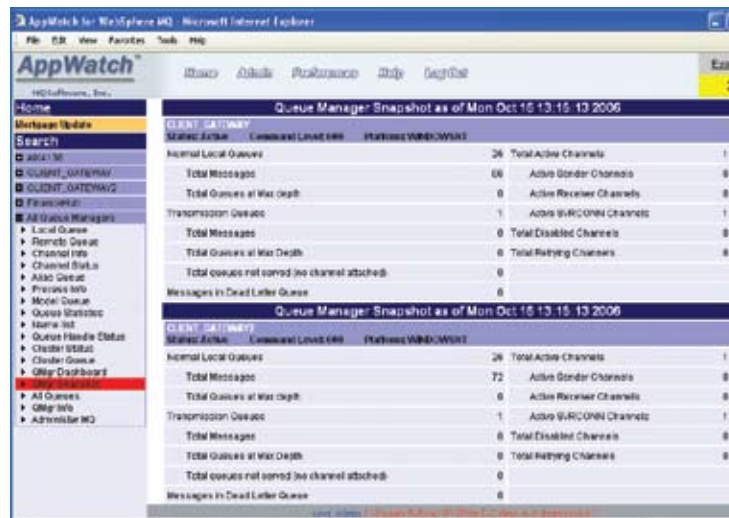


» APPWATCH™ DELIVERS CENTRALIZED PROJECT-BASED WEBSHERE MQ MANAGEMENT



Solution Description

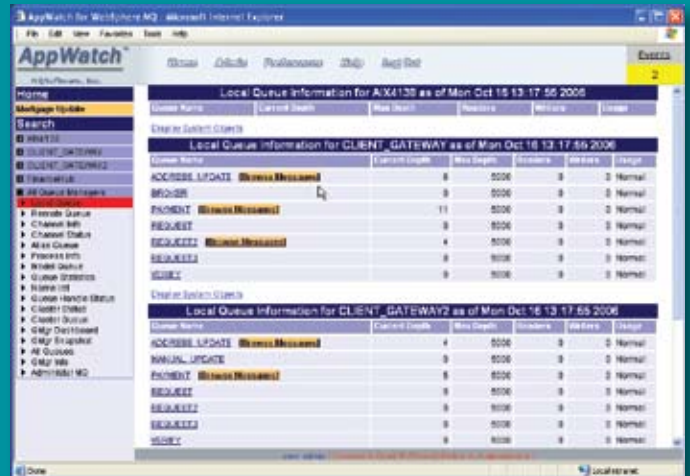
AppWatch is a browser-based WebSphere MQ administration solution, removing the need for platform specific skills. AppWatch security features ensure users only have access to relevant infrastructure objects. WebSphere MQ Administrators may expose groups of WebSphere MQ objects to users to reduce support overhead and increase productivity in development and support teams. Scheduled tasks simplify the creation and management of distributed WebSphere MQ environments. Notification of problems and outages within WebSphere MQ are created by AppWatch and routed to users, reducing the time to resolution. AppWatch is easy to install and its online message viewing and editing capabilities allow users to review and resolve any WebSphere MQ message problems.

AppWatch Key Business Features and Benefits:

- » Enables quicker, more precise rollout of WebSphere MQ environments
- » Provides visualization of WebSphere MQ objects at a project level
- » Includes a fully featured cross-platform Message Editor
- » E-mail alerts to specified users when WebSphere MQ problems occur
- » Increases productivity by reducing developer dependence on WebSphere MQ Administrators
- » Delivers accountability with an auditable WebSphere MQ change log
- » Enforces the use of WebSphere MQ standards
- » Fast administration-free browser access from any location

AppWatch Key Technical Features and Benefits:

- Supports all WebSphere MQ 5.3 and later platforms
- Supports SSL Channels
- Complete Message Management
- Centralized Connection Management
- Configuration, Back-Up, and Versioning
- Audit Trail for Change Control



Operating Environment

AppWatch Server available on:

- Windows XP/2003
- Solaris
- AIX

Middleware Supported:

- AppWatch supports administration and monitoring of WebSphere MQ version 5.3 and later on all platforms where WebSphere MQ client connections are available.
- For platforms that do not support WebSphere MQ Client, connections can be made via a proxy WebSphere MQ queue manager. Any queue manager that supports WebSphere MQ Client can be designated as a proxy.

Implementation, Training, and Support

Implementation

- Consultant installation and configuration
- Customer installation and configuration

Training

- Training from MQSoftware is available
- Both public and private classes, taught by one of our certified instructors, are available

Support

- **Telephone Support**—calls may be placed directly to support personnel
- **Website Support**—product support answers and product release information are available at the company website
- **E-mail Support**—questions can be sent directly to a support staff for review

Learn more about MQSoftware solutions today by calling **800-998-2858** or visiting us at www.mqsoftware.com.

Corporate Headquarters

MQSoftware, Inc.
1660 South Highway 100
Suite 400
Minneapolis, Minnesota 55416
USA
Phone: 952-345-8720
800-998-2858
Fax: 952-345-8721

London

MQSoftware Limited
Rushmoor Business Centre
Kingsmead
Farnborough, Hampshire
GU14 7SR
United Kingdom
Phone: +44-1252-362630
Fax: +44-1252-362637

Berlin

MQSoftware GmbH
Sarrazinstrasse 17
D-12159 Berlin
Germany
Phone: +49-30-859-897-0
Fax: +49-30-859-897-96

Paris

MQSoftware France
54 Rue Botzaris
75019 Paris
France
Phone: +33-1-4201-9433
Fax: +33-1-4201-9432

MQSoftware™

